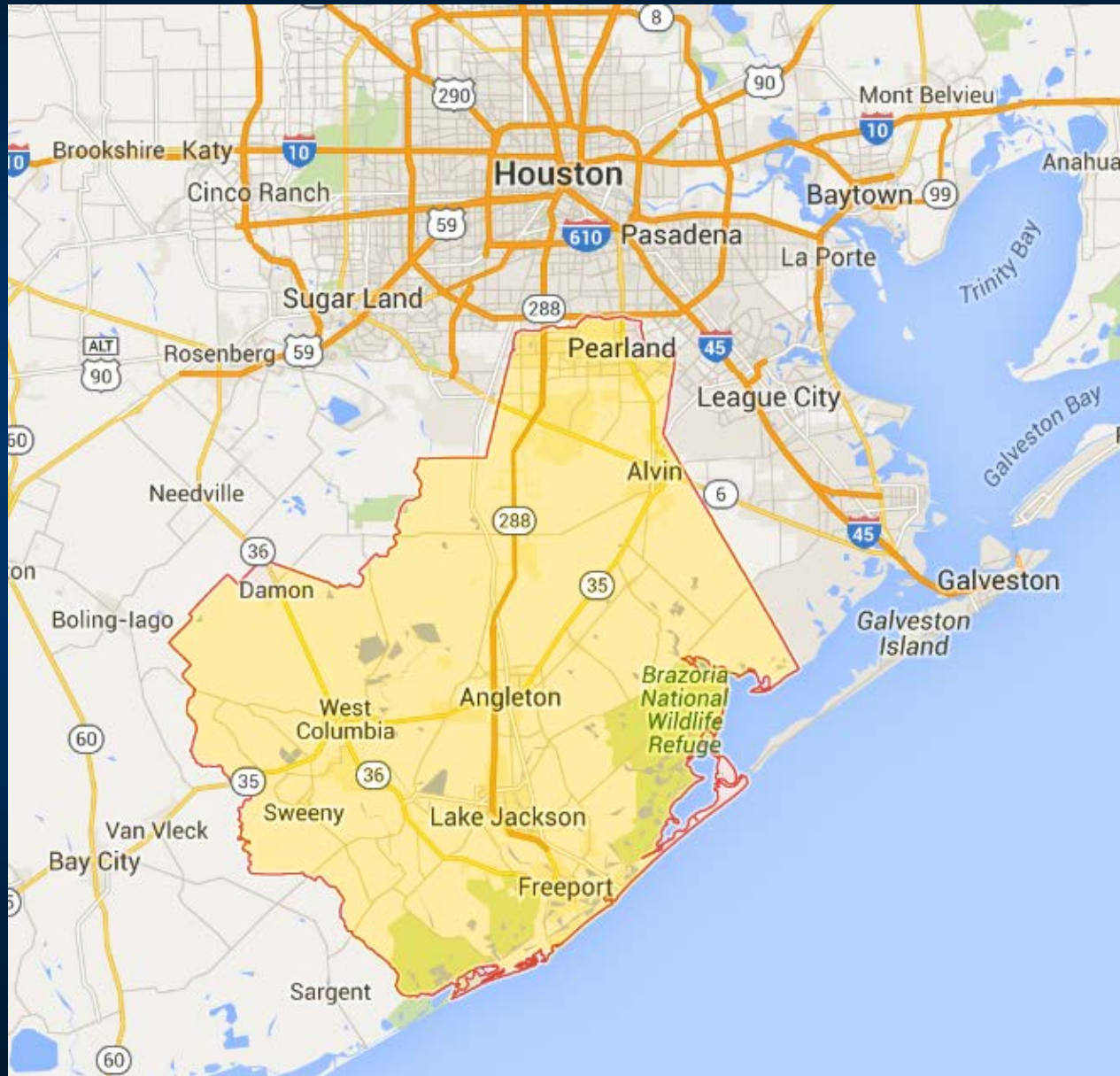




313 W. Mulberry
Angleton, TX 77515
(979) 864-1541

Brazoria County?



**What do Brazoria County Parks
have to offer?**

Great paddling

- San Bernard River;
- Brazos River Paddling Trail;
- Christmas Bay Paddling Trail;
- Numerous other bayous, saltwater lakes and bays;



Wildlife watching













**How to tell the size of an
alligator without measuring?**



dangerous animal?



Sharks kill about 10 people per year worldwide (Discovery.com)

- Despite majority of the world's population lives near /at the coastline, including $\frac{3}{4}$ of world's largest cities (U.S. avg. one death every two years according to NatGeo).
- Lightning kills thousands of people per year worldwide (about 60 avg per year in U.S.).

In the U.S. you are 46 times more likely to be killed by a _____ than a shark.



Keep in mind: more than 3,000 people are killed each year on Texas highways.

Great birding in Brazoria County

- Hundreds of species of birds
- Many stopover on way back from Central and South America in spring













Butterflies



Nice beaches









GLO: Dune Restoration along Follett's Island

60% beach quality sand in core;

90% beach quality sand on surface (cover);





Great RV camping



cabins



Amazing, relevant history



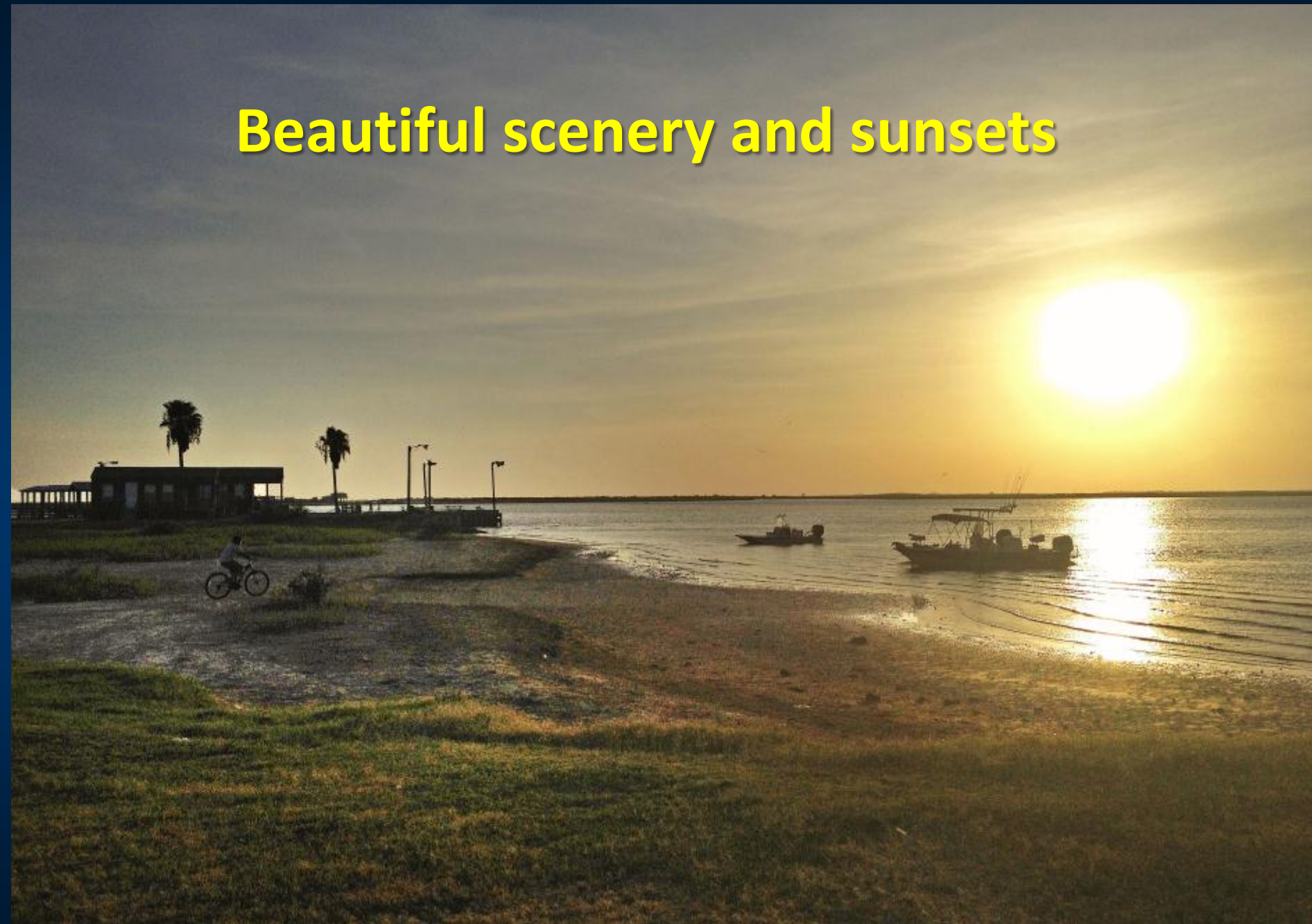
Amazing, relevant history



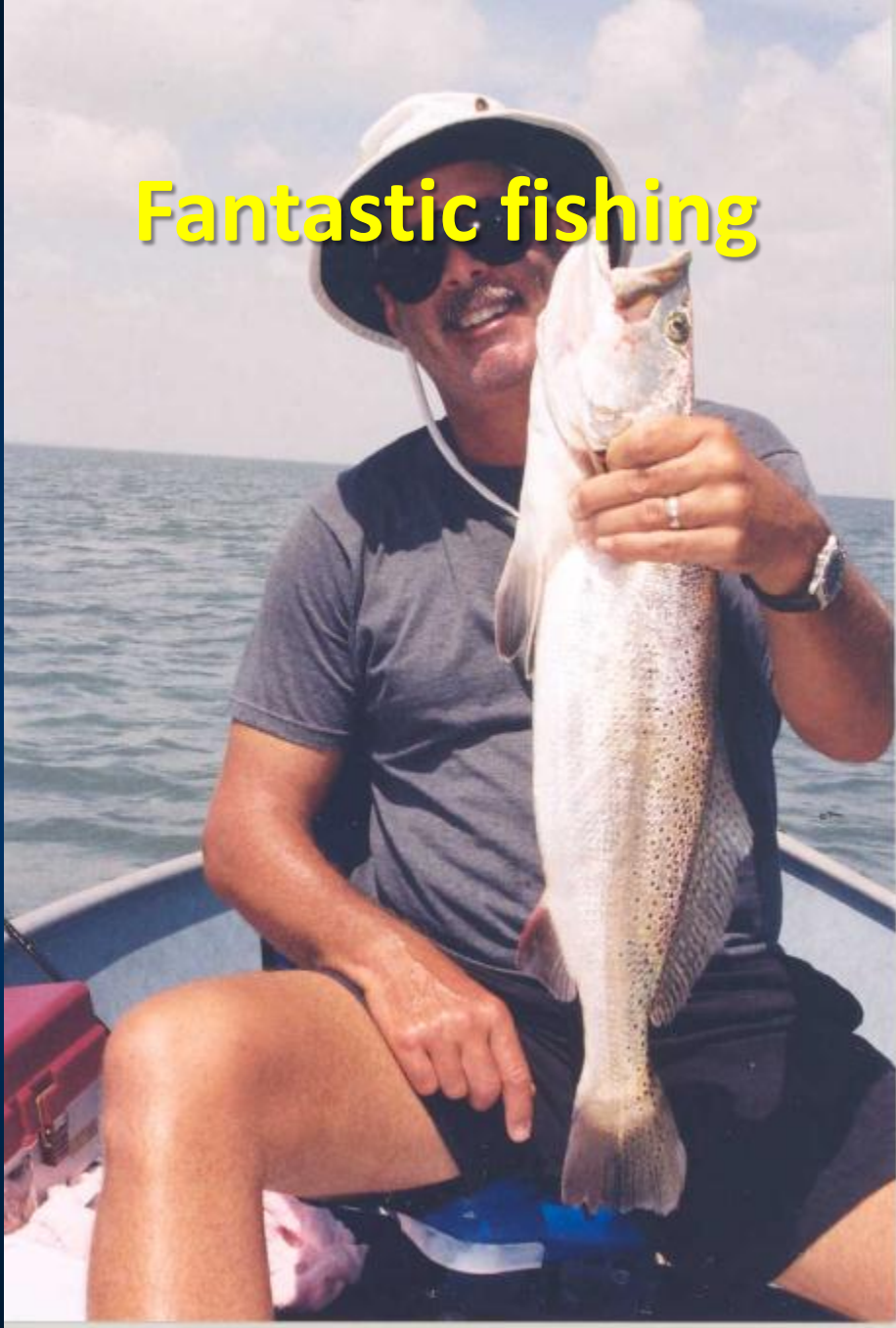
Amazing, relevant history



Beautiful scenery and sunsets



Fantastic fishing



Playing





Brazoria County Parks:

- 11 Parks;
- 21 boat ramps;
- Playgrounds;
- Hiking / multi-use trails (approx. 3.5 miles);
- Paddling Trails;
- 14 miles of public beach; 1 mile of pedestrian beach

Quintana Beach County Park:



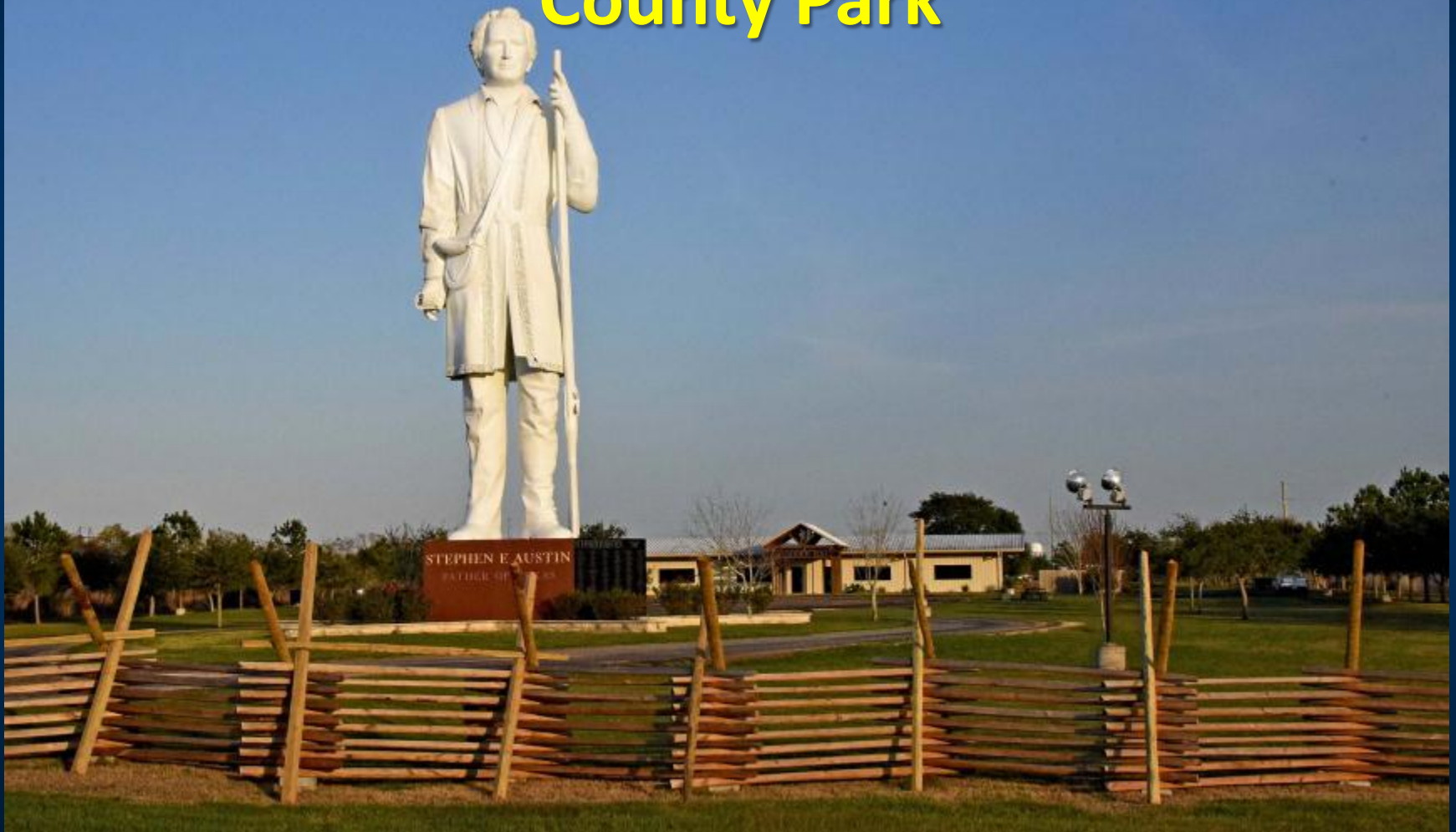
San Luis Pass County Park:



Camp Mohawk County Park:



Stephen F. Austin-Munson Historical County Park





Surfside Jetty County Park:



Surfside Jetty County Park:



Hanson Riverside County Park:



Brazos River County Park:

Resoft County Park:

Buffalo Camp County Park

Albert Finkle County Park:

Kelly Hamby Nature Trail:

What's new in Brazoria County Parks?









New beach signs:



SFA-Munson Historical Co Park

The statue is clean, patched and painted!



SFA-Munson Historical Co Park

All volunteer effort, donation of time, equipment and manpower... saved the county more than \$10,000



SFA-Munson Historical Co Park



SFA-Munson Historical Co Park



SFA-Munson Historical Co Park



Quintana Beach Co. Park



Education Center (CIAP Grant \$)

Quintana Beach Education Center
November 1, 2011

Main Entry View

Wino Rivers Architects











Quintana Beach Co Park



Quintana Beach Co Park



QUINTANA BEACH COUNTY PARK
COASTAL EDUCATION CENTER AND
COASTAL / WETLAND / BIRDING
INTERPRETIVE TRAILS

THE QUINTANA BEACH EDUCATION CENTER AND ADJOINING BOARDWALKS WERE FUNDED WITH QUALIFIED
OUTER CONTINENTAL SHELF OIL AND GAS REVENUES BY THE COASTAL IMPACT ASSISTANCE PROGRAM
U.S. FISH AND WILDLIFE SERVICE AND U.S. DEPARTMENT OF THE INTERIOR



New paint at Quintana!



Replacement boards and
deck continues

New paint at Quintana!



Pollinator Gardens



Quintana Beach Co Park new beach house!



John Hargrove Environmental Complex Trail



National Oak Park





National Oak Park

San Luis Pass Co Park:

New campground road and boat ramp parking lot



San Luis Pass Co Park:

New campground road and boat ramp parking lot



New boat ramp on San Bernard River at Hanson Riverside Park



New boat ramp on San Bernard River at Hanson Riverside Park



New Brazoria County Parks Web site address:

- **www.**BrazoriaCountyParks.org

WHAT WE CAN DO FOR YOU



► Advertise to thousands of visitors, reaching over 100,000+ views per month, spanning the greater Houston area

► Increase attendance by allowing visitors of the site to preview the water/weather conditions

► HD camera and streaming service, maintained and provided by Saltwater-Recon.com

► Multiple advertising positions on Saltwater-Recon.com: homepage, camera page, and sole camera sponsor of your site's camera

► Use of your site's camera feed for your website, providing visitors with live video of your site

► All of your events will be added to our calendar page to help increase turn-out

► Saltwater-Recon.com's social media outlets will further promote your brand/events

► Free advertising on local news outlets that use our video feeds for their weather reports

► We will create up to 3 ads per year for your site

► Saltwater-Recon.com will pay for the internet or any internet upgrades needed



INFO@SALTWATER-RECON.COM

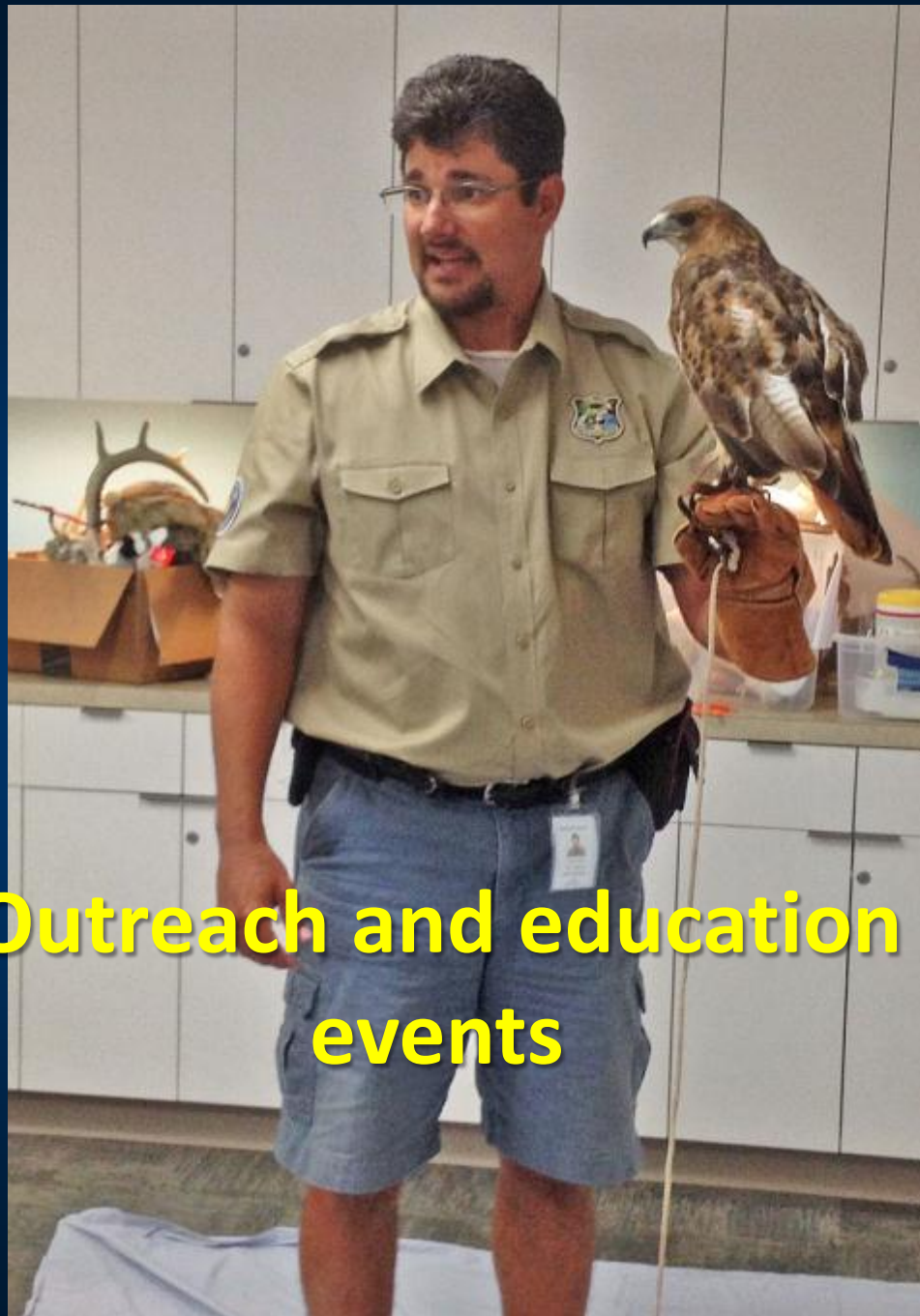
Live Web Cam at San Luis Pass Co Park



**New Trail system coming to
Hanson Riverside Co Park**

Public events and ways you can get involved:

- Become a Brazoria Co. Park Host
- Volunteer (projects or events);



**Outreach and education
events**



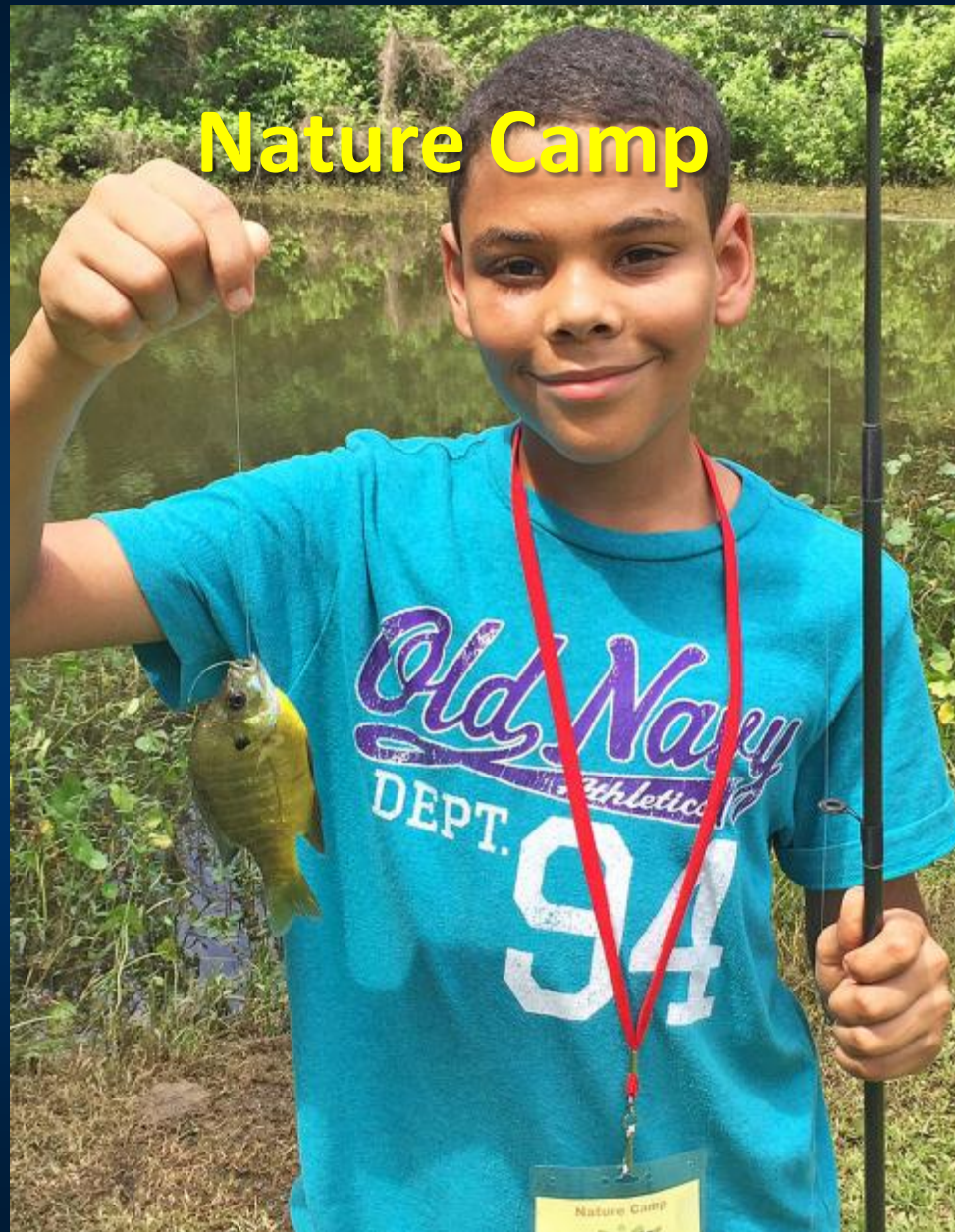


**Just hired a new lead interpreter
and events coordinator**

Nature Camp



Nature Camp



Nature Camp



Dunes Day every Jan.



This Sat,. Jan 21.

Dunes Day: recycling Christmas trees into sand dune anchors



Dune Grass planting



COT Master Naturalists built (and will maintain) pollinator garden at Camp Mohawk



Fall and spring Adopt-A-Beach Cleanup:



Adopt-A-Beach Cleanup



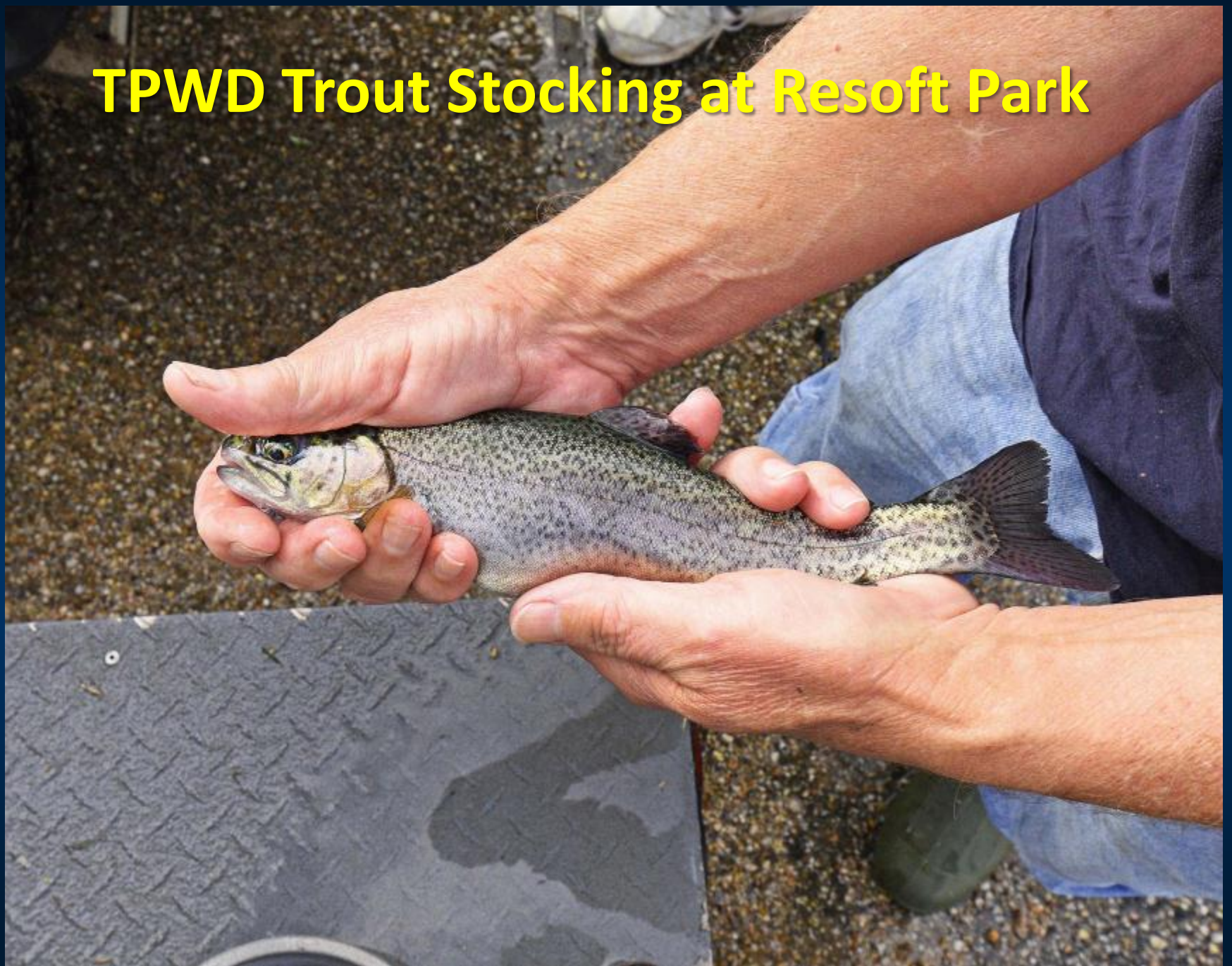


Kayak outings

TPWD Trout Stocking at Resoft Park



TPWD Trout Stocking at Resoft Park



Numerous Historical Reenactments



Numerous Historical Reenactments



Every year, TPWD closes the crab season for 10 days





TEXAS ABANDONED CRAB TRAP REMOVAL PROGRAM
February 19-28, 2016

PLEASE PLACE TRAPS HERE FOR DISPOSAL

Sponsored by:



**And other organizations, businesses, and volunteers
that make the program a great success!**





**UIL Cross Country Meet held at
Resoft Co Park**



**UIL Cross Country Meet held at
Resoft Co Park**

UIL Cross Country Meet held at Resoft Co Park

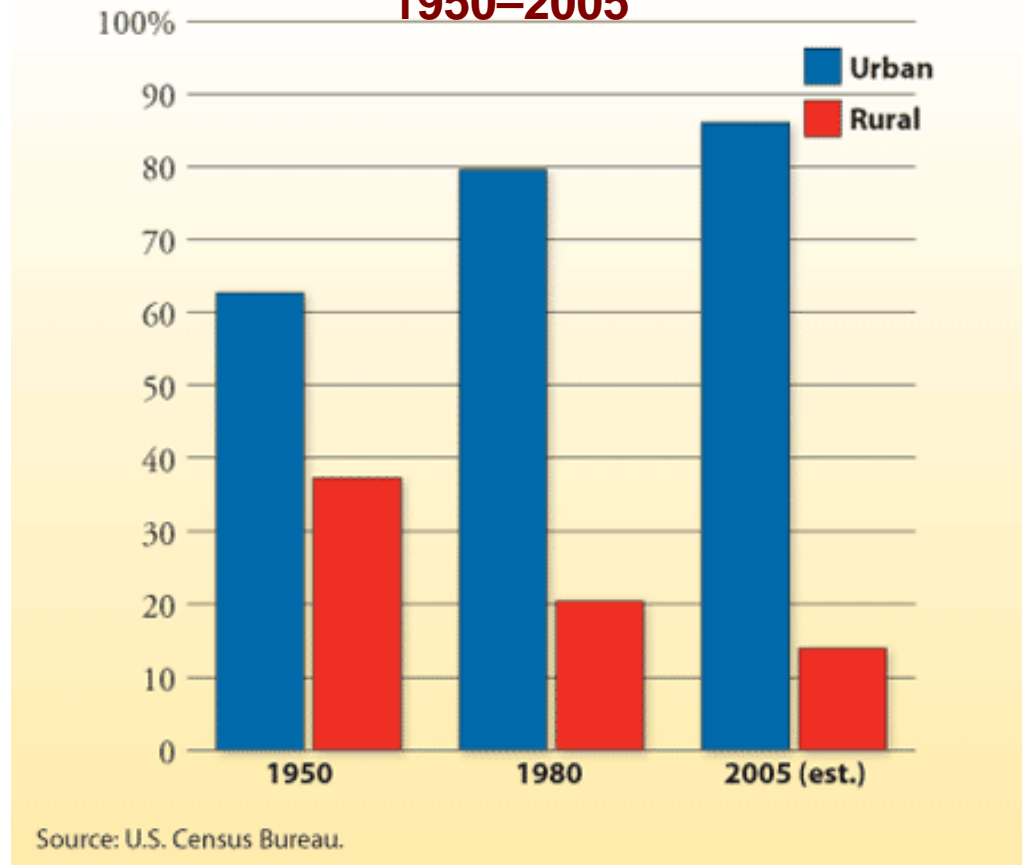


Challenges facing our Parks

- Urban expansion encroachment.
- For first time, more people live in cities than anywhere else (urbanization)
- 85 % of Texans live in urban / metro area (*Texas Tech study*).

Bigger Cities

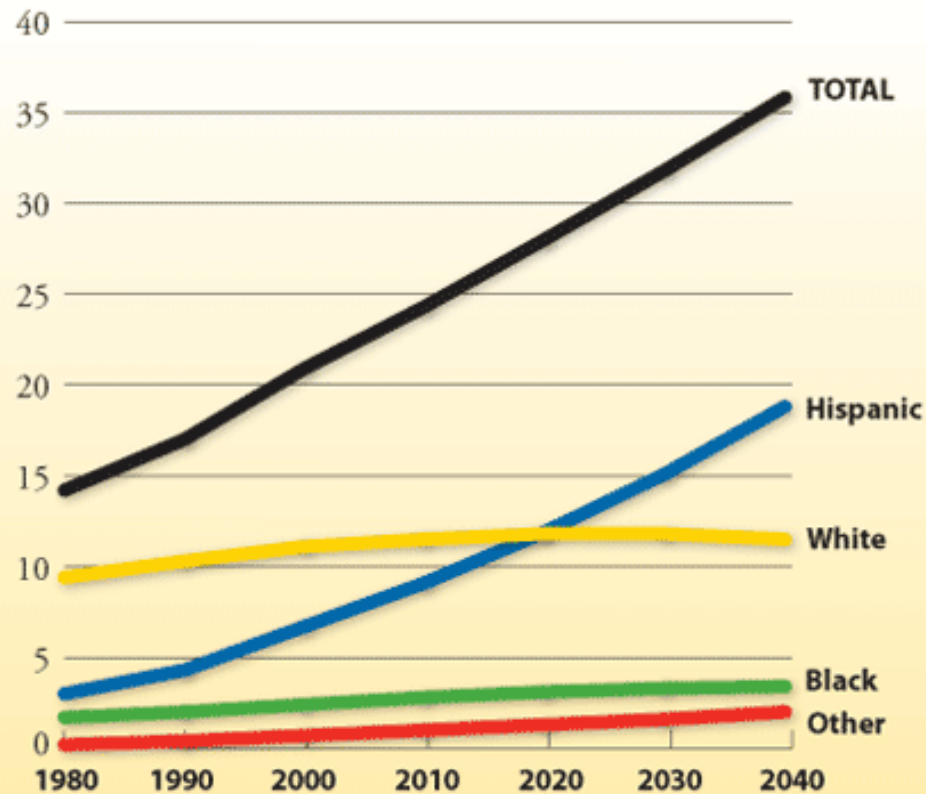
Texas Historical Rural and Urban Populations, 1950–2005



Bigger Population

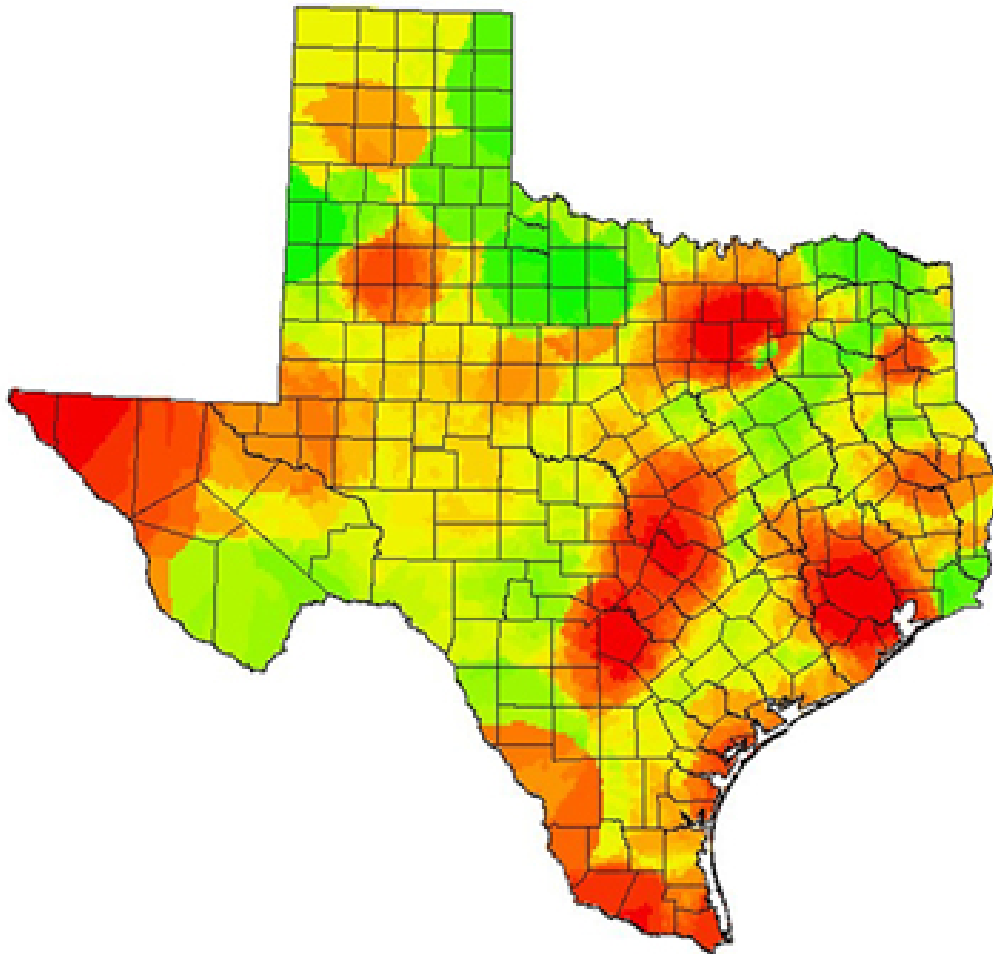
Texas Population Growth, 1980–2040

Population projections, in millions



Source: Texas State Data Center.

Big Impact



Areas of
increased land
development

**Urbanization: a lack of green /
open space**

Mission responsibility to Texans

- Protect state wildlife and resources
- Preserve state public lands and public access, a dilemma for Texas
- some 95 % of Texas is privately owned.

why is this a challenge?

- For first time, more people live in cities than anywhere else (urbanization)
- 85 % of Texans live in urban metro area.
- As urbanites (adults and children), they are (literally) completely disconnected to nature, outdoors
- Why should we care?

Lots of reasons:

- Loss of resources.

very real challenge:



Texas does not have enough water now to fulfill all of its estimated needs.

Texas is at risk of losing native plant and animals forever.



Animals that once lived in Texas...









Endangered or Threatened species in Texas...



Hunting in 1894, shown in front of Velasco Hotel, Velasco, TX









Freeport, 1923



Lots of reasons:

- Loss of resources.
- Our children, and concerns with future generations.

**Which of these images is
more likely to be seen:**

A.



B.



Today's Children

- 8-year olds can identify **25% more Pokemon / Anime** characters than wildlife species.
- children ages **6 mo. - 6 years** spend an average of **1.5 hours a day** with electronic media.
- youth **ages 8 -18** spend an **average of 8 hours a day** with electronic media.
- youth spend **less than 4 minutes a day** in unstructured outdoor play.
- 16% of children (1/3 of Texas kids) ages 6-19 are overweight / obese-- amount has **tripled** since 1980.



**Why this disconnect with
kids and the outdoors?**



Parents view the outdoors as wild, dangerous places... hence, limit children's exposure.



Parents fear appearing incapable or lacking in front of their children... so they don't go.



Parks are seen as “boring” places
where there is nothing to do.

More data... for adults too:

- 15-minute walks thru forests can decrease stress hormone cortisol by 16%, reduce blood pressure by 2%, reduce heart rate by 4%;
- 3 days in nature can improve creativity by up to 50%;

- Lower incidents of 15 diseases (including depression, anxiety, heart disease, diabetes, asthma and migraines) in those living ½ hour from green space *Dutch research*
- Scottish study found less death and disease in people who live near parks and green space, *even if they didn't use them.*

- A 50-minute walk thru green space improves cognitive skills, such as short-term memory, while walking in an urban environment did not.
- Yet, visits to state and national parks are down, and one survey showed that only 10% of American teens spend time outside every day.

Conclusions: why important to big picture

- If nature isn't experienced, it isn't appreciated.
- If it isn't appreciated, it won't be valued, nor funded, for the future.
- Therefore, resources and places will not be preserved.
- Research already shows, that when people have time to spend, "going outdoors" doesn't even make the list of possibilities for many.

Conclusions: why important to big picture

- Spending time in nature makes people healthier, decreases stress, enhances creativity, even evidence that kids do better in school.
- bottom line: it is a very real possibility that much of Texas' outdoors will not be here for our kids, or grandkids.
- outdoors is our legacy in Texas; it will only be preserved if we share it with the next generation.

Economic Impact of Parks data from NRPA:

Local, regional parks generate nearly \$140 billion in economic activity per year, and support almost 1 million jobs in the U.S.

In Texas:

- \$6,323,030,540 in economic activity for 2013;
- Supported 51,190 jobs in the state;

Nov. 19, 2015 www.nrpa.org/parkeconreport

Brazoria County park revenue 2015:

\$738,656.22**

Brazoria County Park Revenue History

Park	following Hurricane Ike	2010	2011	2012	2013	2014	2015
	2009						
Quintana	\$270,896.76	\$248,462.61	\$262,750.37	\$243,865.12	\$260,022.60	\$259,336.38	\$313,072.44
San Luis Pass	0**	\$206,114.45	\$283,631.73	\$300,638.40	\$316,566.67	\$332,015.57	\$355,058.90
Camp Mohawk	\$52,075.00	\$53,735.74	\$61,046.49	\$67,081.96	\$57,149.00	\$61,677.48	\$51,144.88
Resoft	\$17,430.00	\$16,255.00	\$15,715.00	\$10,680.00	\$16,810.00	\$12,112.50	\$14,585.00
Brazos River	\$840.00	\$580.00	\$900.00	\$635.00	\$690.00	\$690.00	\$720.00
Hanson Riverside	\$750.00	\$675.00	\$825.00	\$1,275.00	\$1,050.00	\$975.00	\$1,050.00
Total	\$341,991.76	\$525,822.80	\$624,868.59	\$624,175.48	\$652,288.27	\$666,806.93	\$735,631.22

**** Hard dollars only (not counting ripple effect of economic impact)**

Reality...

- If you remove the park from the map, how different would these communities look?
- you wouldn't just change the physical landscape... but also the fiscal landscape as well.



313 W. Mulberry
Angleton, TX 77515
(979) 864-1541